

Wrenching with Rocky DIY Moto Maintenance



Background

Tools

Materials

Resources

**Moto
Maintenance**



Background

- 2017 Accident
- Must get new bike
- Bought a maintenance-heavy Ural Gear Up
- Learned to use resources
 - In the 1st 2 years of ownership, I changed head gaskets, set valve clearance, changed clutch plates, changed and re-routed fuel lines, replaced fuel pump, changed swingarm and driveshaft, replaced tires, changed brakes, added mods, and diagnosed several issues
- Best day ever was canceling my service appointment because I finally fixed the problem myself the night before.



Wrenching with Rocky DIY Moto Maintenance



Background

Tools

Materials

Resources

**Moto
Maintenance**

Basic Tools



Ratchet Set

Screwdrivers

Allen Wrench Set

Breaker Bar

Wrenches

Torque Wrench

Scissors/knife

Wrenching with Rocky DIY Moto Maintenance



Background

Tools

Materials

Resources

**Moto
Maintenance**

Materials

Gloves
Shop Towels
Bike Specific Oil & Oil Filter
Oil Catch Pan
Funnel
General Lubrication
Chain Cleaner & Lube
Grunge Brush
Cable Lube & Tool
Flashlight
Brake Fluid
BLUE Loctite



Wrenching with Rocky DIY Moto Maintenance



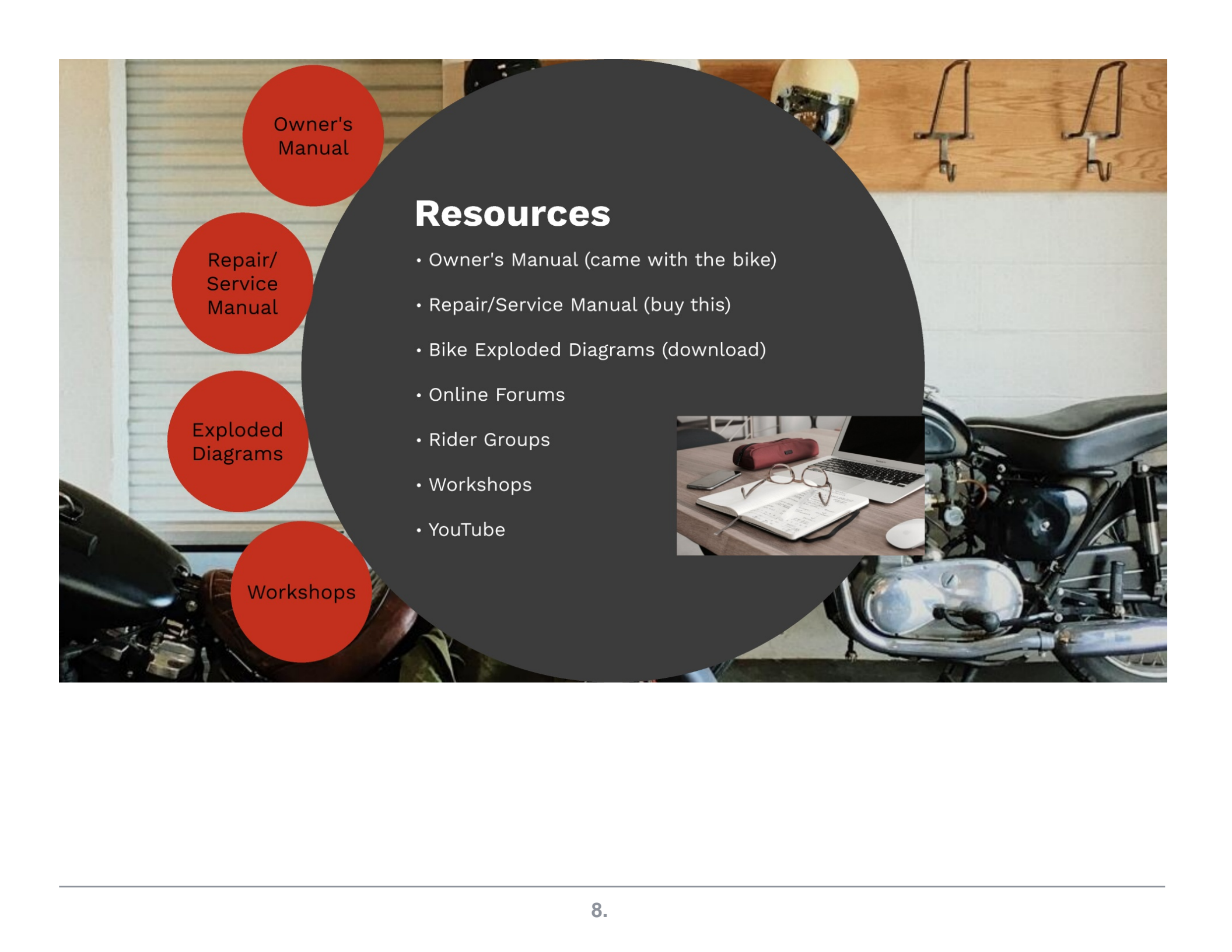
Background

Tools

Materials

Resources

**Moto
Maintenance**



Owner's
Manual

Repair/
Service
Manual

Exploded
Diagrams

Workshops

Resources

- Owner's Manual (came with the bike)
- Repair/Service Manual (buy this)
- Bike Exploded Diagrams (download)
- Online Forums
- Rider Groups
- Workshops
- YouTube





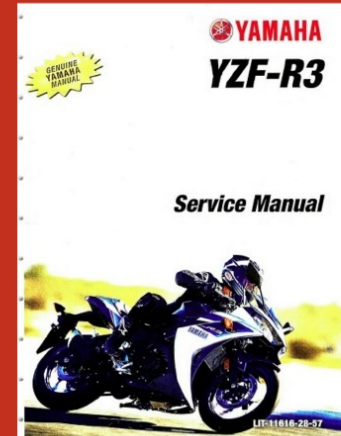
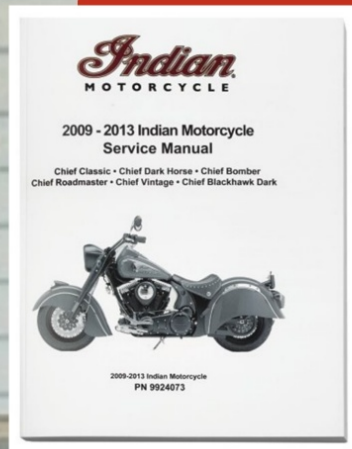
Owner's Manual

- This should come with your bike



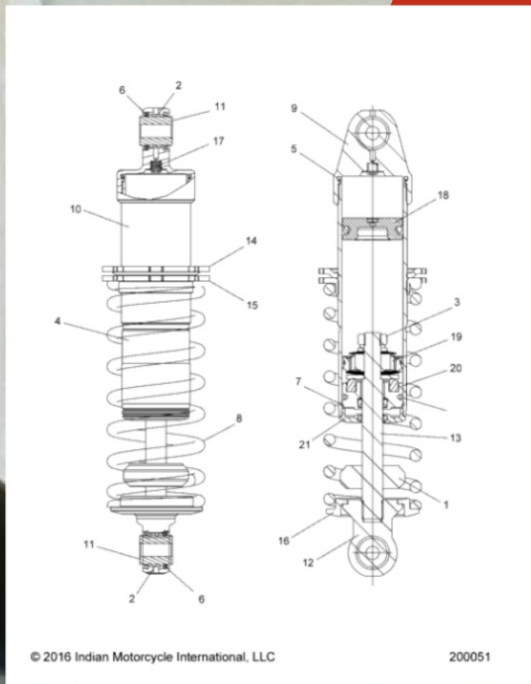
Repair/Service Manual

- Made by Haynes, Clymer, Chilton, etc.
- Can be purchased online or at your dealership



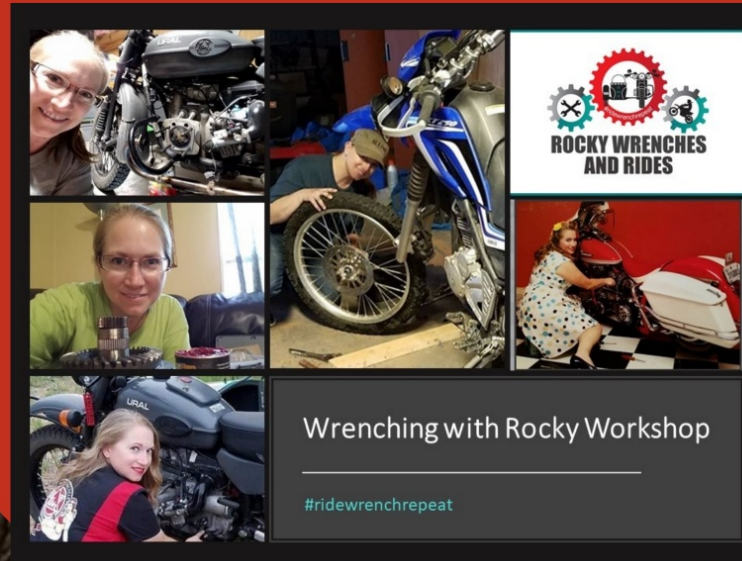
Exploded Diagrams

- Can be found online at oem parts sellers
- Partzilla, PartShark, Ronnie's Harley, etc.



Workshops

- Look for workshops at ladie's bike nights or at rallies



Wrenching with Rocky DIY Moto Maintenance



Background

Tools

Materials

Resources

**Moto
Maintenance**



Rocky's Recommendations

- Tires
- Oil
- Drive Line
- Brakes
- Air Filter
- Battery
- Cables
- Coolant
- Tin Man Treatment
- Bolts

Tires

Oil

Drive
Line

Brakes

Air Filter

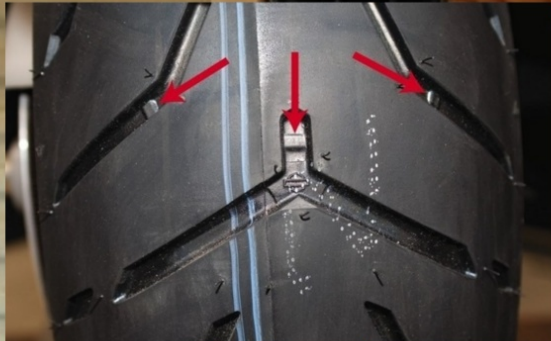
Battery

Cables

Bolts

Tin Man

Radiator



Tires

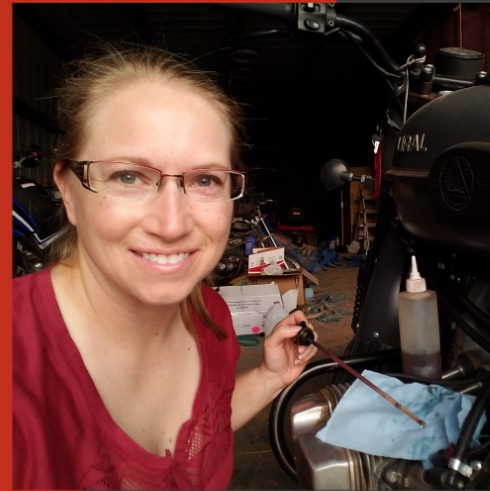
- Inflate to correct pressure
- Check tread depth - Use wear indicators
- Check for uneven wear
- Look for foreign objects
- Check for dry rot





Oil

- Change oil and filter if at the recommended mileage
Refer to owner's manual for intervals and oil recommendations
- Otherwise check oil level and quality



Drive Line

- **Belt Drive**

- Inspect belt for wear inside and outside
 - Inspect the pulleys
 - Check belt tension

- **Chain Drive**

- Clean and lube the chain, check for wear
 - Check teeth on sprockets for wear

- **Shaft Drive**

- Check or Change final drive oil
 - If driveshaft is exposed, u-joints may be visible and need to be greased





Brakes

- Check fluid level in both reservoirs
- Check pad thickness
- Check brake lever response
Bleeding may be necessary





Air Filter

- Check or replace air filter at each oil change





Battery

- Keep battery on a tender to remain fully charged
- Check and clean terminals





Cables

- Oil the throttle and clutch cables with a proper cable lube and cable lube tool



Radiator

- If your bike has a radiator, check coolant level and quality (be careful if engine is hot)
- Consult your manual for recommended coolant.
- Check for damage to the radiator fins. You may want to invest in an aftermarket radiator guard.

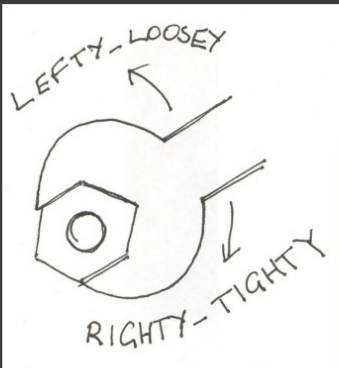




Tin Man Treatment

- Apply WD-40 or other lubricant to any area with a hinge or lever
 - Kick stand
 - Footrests
 - Any other moveable part
- Stay away from brake pads
- Consult your manual for areas that may need a grease gun





Bolts

- Check over the bike to ensure bolts are tight. Sometimes vibration causes a bolt to loosen. If one is loose, take the time to put some BLUE Loctite on it when tightening it back up. You can do this check in sections and rotate sections of the bike at each month.
- Check owner's manual for torque specifications



Wrenching with Rocky DIY Moto Maintenance



Background

Tools

Materials

Resources

**Moto
Maintenance**